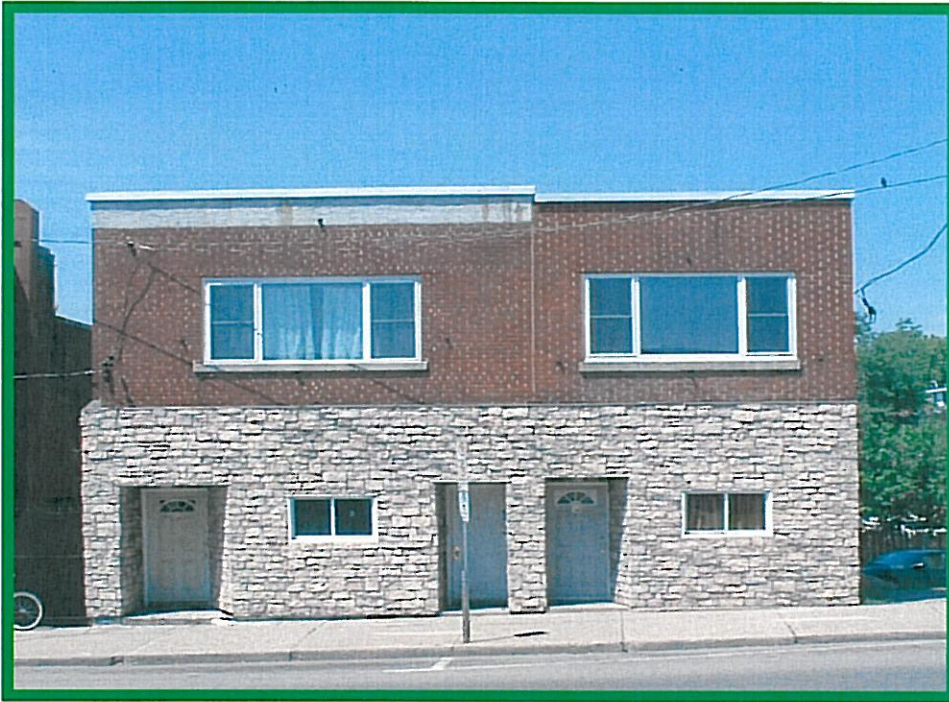


# Brantford Native Housing



## ADDRESS

312-314 Colborne Street  
Brantford, ON N3S 3M9

## HIGHLIGHTS

- These four apartment style units are located in Central Brantford.
- Two units are located on the ground floor; two units on the second floor (no elevator).
- All units are rent geared to income.
- A stove and refrigerator come with each unit.
- Utilities are included in the monthly rent.
- Applicants must meet Native Ancestry criteria.

Size of unit	Units per Project	Modified Units	Square feet/unit
1 bed	4	0	600